

## Tysoe Parish Plan 2010



## Acknowledgements

### Thank you

Thank you to all the residents who distributed, collected and completed the questionnaire and who attended the consultation events. Your support was invaluable.

Thank you to The Tysoe Butcher, Penny Varley Ceramics, Cost Cutter Store, Pippa's cakes, New Looks and the Post Office for generously giving the prize for the raffle ticket winner on the receipt of their completed questionnaire.

[www.commissionair.co.uk](http://www.commissionair.co.uk)

### Congratulations

Congratulations to the winner of the Tysoe Logo Competition - Nick Bailey

### Volunteers from Survey

In response to the request made in the survey questionnaire, 42 residents volunteered to support the range of projects and activities put forward. As each proposal is endorsed the Clerk to the Parish Council will advise the relevant volunteers as the first step to forming an action team.

### Committee

Brad Lawes, Jacqui Franklin, Jacqui Sinclair, Penny Varley, Gill Roache, Michael Rumke, Andy Camp and Angus Martin.



## **Tysoe Parish Plan Contents**

### **Introduction**

What is a Parish Plan?

### **The Parish of Tysoe**

Who lives in the Parish?

Where do they live?

Where do they work?

### **Survey Results**

#### **Roads and Transport**

Parking

Managing Traffic Speed

Road Condition

Street Lighting

Bus Service and Voluntary Transport

Bus Shelter

#### **Local Environment**

Flooding

Footpaths and open spaces

Historic Tysoe

Diversity of Wildlife and Habitats

Areas in need of additional Environmental Protection

Litter and Dog Mess

Crime

#### **Local Services**

Tysoe's Churches

Tysoe Post Office

Peacock Inn

Recycling

Sports and recreation

Local Business

Children's responses

Young People's responses

Housing needs

Parish Council

#### **Projects and Improvement Ideas**

Additional Resources

Village Welcome Pack

Evening Event in the Tysoe Show Marquee

Regeneration of the Tysoe Red Horse

Restoration of Tysoe Windmill

Community Notice Board

Local Produce Market

Tysoe community website

First Responder (defibrillator)

#### **Action Plan and Next Step**

#### **Business Directory**



## Introduction

### What is a Parish Plan?

The Tysoe Parish Plan has been created to form a snapshot of residents' views for the future development of the Parish. The production of a Plan can help to achieve support and funding from Councils and charities as it highlights views and potential projects identified by the villagers for their community.

Tysoe Parish Plan committee was set up by the Parish Council at the end of 2008. Since then there have been exhibitions, a logo competition, and public meetings. Tysoe School became involved and created a map of the village for exhibition at the Flower Show, where more consultation was undertaken. A questionnaire was circulated to all homes in the Parish in May 2009. There was a 59% response rate giving a significant sample size for evaluation. This was professionally analysed by Warwick Network Ltd.

The Parish Plan has been assembled by the committee, who have put together the Action Plan based on the responses given. Obviously it was not possible to list all responses, but the most widely-held and strongly expressed views have been included.

The final document has been shown to and endorsed by the Parish Council before distribution. It was presented and formally adopted by Stratford District Council on 30th September 2010.

In this report, where percentages are shown they apply only to the number of responses to the question to which they relate.

In this report the following abbreviations apply:

PC = Parish Council

SDC = Stratford District Council

WCC = Warwick County Council



Teresa Laws



## The Parish of Tysoe

Tysoe Parish is an attractive rural parish in southern Warwickshire. The Parish covers an area of nearly 4940 acres rising from the flat agricultural landscape of the Vale of Red Horse, which takes its name from the large Red Horse of Tysoe that was once cut into the red ironstone soils of the Edge Hill escarpment. The escarpment rises steeply to over 700ft from the Vale below, and forms the eastern boundary of the Parish and the northern boundary of the Cotswolds Area of Outstanding Natural Beauty.

Ben Cherry



The Vale is where the village of Tysoe is located. Tysoe itself is made up of the three small hamlets of Lower, Middle and Upper Tysoe. This is where the majority of the 456 households and 1,100 residents now live alongside two churches, the Post Office, a shop, a butcher's, a hairdresser's, a public house, a junior and infants' school and a doctor's surgery. The village is also fortunate to have a number of important community facilities including: the Village Hall, the Sports and Social Club, Tysoe Sport Club, The Old Fire Station Pre-School and the Tennis Club facilities which are located next to the children's play area, skate park and football pitch.

### Who Lives in the Parish?

The responses to the questionnaire in many ways confirm the results from the last Census (2001) and the last Tysoe Parish Appraisal, in 2000 in that almost half the population (45%) are aged between 30 and 59 years old. The village also has a good mix of age groups which is evidence of a strong local community. Over 20% of residents are of school age, while 25% are over 60 years old.

Over 50% of the population are married and more than 75% live in a household of two or more residents. The vast majority of residents (97%) state their ethnicity to be White British and describe their religion as Christian (80%).

The largest proportion of respondents have lived in the Parish for between 6-15 years (34% of respondents), but more than 25% of respondents have lived in the Parish for 25 years or more, which is evidence of a strong connection and commitment to the village and local community.

### Where do they live?

Since the early 18th century the majority of residents in the Parish have lived in the villages of Lower, Middle and Upper Tysoe. This remains the case, with over 90% of respondents to the questionnaire residing in the villages with only 5% from the outlying areas.

Of the households that responded to the questionnaire, by far the majority own their properties (78%) and live in a detached house or bungalow (55%). Homes tend to be heated by oil (55%). Less than 2% of respondents currently have a supply of energy directly from renewable sources but almost 10% of respondents are considering investing in renewable energy systems in the short-term.

### Where do they work?

The pattern of employment is similar in many ways to that identified in the previous Parish Appraisal and the last Census, with approximately 35% in full or part-time employment. A significant proportion of respondents of working age are self-employed (25%) and approximately 25% are retired.

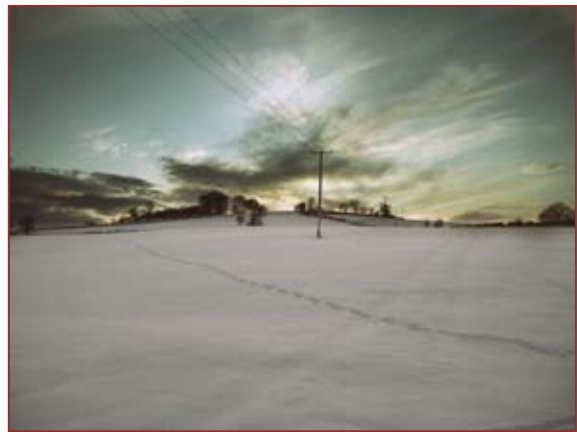
A significant proportion of respondents to the questionnaire work in Tysoe, or from a home located within the Parish (30%). However, the parish has a relatively high level of car ownership and this, in part supports the wide range of locations that respondents identified as their normal place of work. Many households work within the Banbury, Stratford and Warwick

areas (42%), but over 25% work elsewhere within the Midlands or beyond.

From the responses to the questionnaires it is evident that many of those that live in the Parish are proud to do so. Some have lived here for generations and others have moved here to enjoy the high quality of life. This Plan seeks to identify issues of importance to all elements of the local community and begins to set out actions to help continue to protect and enhance the environment within which we live.



Ben Cherry



Lucy Winter





## Survey Results

### Parking

Over 60% of respondents to the questionnaire live in a household with two or more cars and it is perhaps not surprising, therefore, that car parking was seen as an important issue for 56% of respondents. Some respondents were concerned about the level of on-street parking causing congestion and restricting visibility, particularly where households are regularly



parking close to junctions. Other respondents were more concerned about an increasing use of the many attractive grass verges in Tysoe for car parking. This was felt to be unnecessary in many instances and damaging to these important areas, which are seen by some as an important part of the character of Tysoe.

A significant proportion (122) of respondents were concerned by the level of car parking associated with users of the sports ground and other visitors to the village (e.g. as a starting point for walkers) and felt that additional parking should be created permanently in the village or greater use be made of temporary surfaces and parking areas, to provide more opportunities for off-street parking for village events. However, by far the majority of comments related to the dangers of parking during the school drop-off and pick-up period. More than 70% of those respondents that provided additional details of their concerns about parking in the village specifically described the risks associated with vehicle and pedestrian safety resulting from dangerous parking on the bends on Main Street in front of the surgery and Church.

*“Around the school area is very dangerous at the beginning and end of the school day, with parents parking around bends and in unsafe areas.”*

### Action

- WCC/PC to discuss the preparation and implementation of a Green Travel Plan with the School
- WCC/PC to consider further restrictions to parking in hazardous areas
- PC to consider dedicated signage or requests on Notice boards to encourage reasonable parking by visitors to the village and users of the sports field.
- PC and WCC to consider introducing appropriate intervention to protect grass verges (e.g. use of Hornton stone rather than signage.)
- PC to consider the need to extend hard surface parking next to Fire Station to cater for village events and to encourage greater use of this area to reduce on-street parking.

### Managing Traffic Speed

The speed of traffic in the parish, particularly through Tysoe itself, was identified as a concern by 56% of respondents. Of most concern was the speed of traffic along Main Street (40%), Oxhill Road (28%) and Lower Tysoe Road (16%).



Speeding traffic was considered to be a nuisance, but also a danger, and a significant number of respondents called for measures to slow traffic.

Some respondents experience difficulty crossing the road in places, particularly in connection with crossing the road to get to the former Fire Station and the sports field. A few respondents also highlighted speeding farm vehicles as a particular hazard at certain times of the year.

*"We are concerned with speeding traffic and would very much like pedestrian crossing and speed management measure."*

*"Oxhill Road is used as a race track"*

*"Chicanes and speed humps to slow traffic."*

*"Use of hand held speed cameras in Oxhill Road."*

To manage traffic speed, by far the majority of respondents supported low intervention measures. The most favoured were a combination of a village gateway (15%), reduced speed limits through the village (18%) and illuminated/flashing speed signs (24%) in appropriate locations. Least favoured were speed cameras and physical interventions such as road narrowing and speed humps. A number of respondents expressed a strong view that new measures should not require the introduction of too much new signage, which was not considered to be in keeping with the rural character of the village.

#### Action

- **PC/WCC to consider putting down speed trackers in highlighted areas to identify any factual basis behind the perceived issue of speeding vehicles**
- **Where speeding traffic is identified as a persistent and significant problem, PC/WCC to consider introducing low intervention measures such as those described above. Further consultation to be undertaken on the most appropriate measures once problem locations identified.**

#### Road Condition

The condition of the roads around Tysoe was highlighted by a number of respondents as being below the expected standard. Although no specific questions were asked on this matter, approximately 10% of respondents specifically mentioned the presence of potholes as a danger or hazard to driving in the parish.

Specific mention was also made of the lack of gritting on the road between Tysoe and Kineton during the winter. This was described as a popular route and one now used by some of the school buses. Without gritting this route was described as particularly hazardous and as the location of numerous accidents.

#### Action

- **WCC to disseminate details of the road maintenance programme and the standards expected in rural areas.**
- **PC to consider lobbying WCC for improved road surfacing in the parish and to identify the priority locations**
- **PC to consider lobbying WCC to add Kineton Road to gritting schedule.**

#### Street Lighting

More than 66% of respondents felt that street lighting in the Parish was adequate and that there was no need for significant improvements. Of these a number of respondents stressed that more lighting would not be in keeping with the rural character of the village and that there was already too much light pollution.

However 82 respondents highlighted particular areas in the village where they believed lighting should be improved. In some cases locations were identified where better maintenance of existing lights was felt to be needed or locations where existing lighting has become overgrown by trees. More than 55 respondents highlighted specific locations or streets where they felt lighting should be improved to enhance security and safety in the village. One suggestion was to turn off street lighting at midnight.





### Action

- Parish Council/WCC to review street lighting in the village.

### Bus service and Voluntary transport.

Public transport is used regularly by a relatively small number of residents of Tysoe (9%). However for those who rely on it the bus is a vital service. The numbers using public transport infrequently is also relatively small with over 80% using it between 1 and 3 times a year.

Areas highlighted that need improving or changing were timetables, routes and frequency, (this was also raised in the 2000 Parish Appraisal) and the need for a bus shelter and the costs. The majority of bus users go to Banbury and Stratford with less than 19% going to other locations. 141 residents stated that they were aware of the voluntary transport facility, however, only 14 people use the service regularly with currently 13 volunteers running the service. 45 people have volunteered their services through responses to the questionnaire. The Shipston Link is known to 221 residents with 19 people regularly using it although 27 people felt that they would use it if it ran on a different day. Respondents suggested that the buses be downsized on Banbury and Stratford routes to reduce cost, and carbon emissions.

### Action

- Results of this survey will be passed on to the local bus service provider to be considered in future service planning.

- Results of this survey will be passed on to the Shipston Link service provider to be considered in future service planning.
- Pass on volunteer name to the Shipston Link.

### Bus Shelter

The need for a bus shelter resulted in 84 respondents in favour and 75 against, with 35 saying it should be sited on the corner of the Oxhill Road and 36 identifying areas in Main Street from The Peacock to the Fire Station

### Action

- Parish Council to investigate the requirements for and the location of a bus shelter.

## Local Environment

### Flooding

The question of drainage caused more comments of concern than any other in the entire survey. There were 122 comments on flooding alone. 39% of the comments related to ditch cleaning and maintenance, whilst 24% cited storm drains needing regular cleaning. Improvement of the main drainage system in the village was mentioned by 18% of respondents.

Simon Forrester



The question relating to flood planning shows that there is a significant issue for many residents. 95% of those answering the question felt it important that those with local flooding knowledge be consulted before any new building work is undertaken in the village.

Other suggestions which came forward were for balancing ponds, a flood plain and chevrons on the hills to divert hill run off. Specific areas of concern were Avon Avenue; Main St near the Fire Station, and Back Lane. There were also requests for information regarding flood warnings and who to contact in an emergency.

Simon Forrester



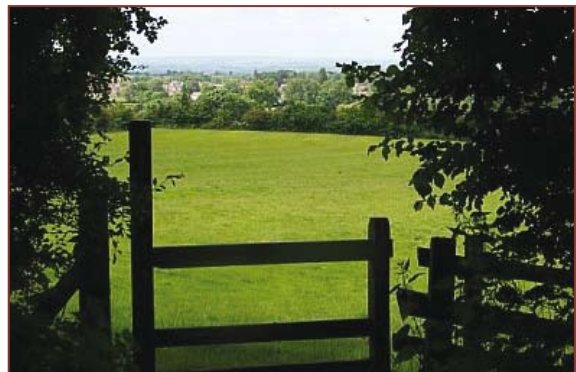
### Action

- Questions and proposals will be put to the Parish Council with a recommendation that they publish a detailed response about flood prevention measures in the near future.

### Footpaths and Open Spaces

This section of the questionnaire provided some very useful feedback for the various interested parties in the parish to consider. In terms of usage the respondents were asked how often they used the playing fields and open spaces, and the majority (42%) used them either daily or weekly, but a significant number (32%) responded that they hardly used them at all.

The same question was asked of the footpath system in the parish with 49% saying that they used footpaths daily or weekly and 23% stating that they used them hardly ever. In both cases, usage over 40% is significant but there is still some way to go to improve the usage and issues such as access and information, which came through in the comments section, may



Joel Morris

help to improve this area. The footpath system was also rated in terms of its condition and the good news is that 73% of respondents rated the footpaths in the parish as either very good or fairly good with the minority rating them as fairly poor or very poor (8%). In addition the issue of access was rated with an encouraging result of 81% of respondents stating that they had no access problems and 19% stating that there were some issues which also bears out the improvements made in the footpath system over the last decade.

**Action**

- **Wider information regarding the mapping of the footpath system – could feature on the Parish website (if this is taken forward and developed), Notice Board and/or in the Parish Welcome Pack, referred to elsewhere in this report.**

**Historic Tysoe**

The historic aspects of the Parish were rated in terms of how well they were managed, promoted and appreciated. Over 80% of respondents felt that the historic places and features were well managed, whereas only 34% felt that they were well promoted – and



Courtesy of Lillian Hopkins

this could well link back to the requirement to have a central information facility (i.e. website, noticeboard and welcome pack) that was raised earlier in this section. The good news is that the vast majority of respondents (71%) appreciate our history and historical features – so it is an important element of the parish fabric that we need to keep well maintained.

**Action**

- **Recommendation for a list of historic sites to be featured in the proposed Parish website and Welcome Pack.**
- **Tysoe Historic Society to be informed of these results.**

**Diversity of Wildlife and their Habitats**

Suggested improvements to encourage diversity of wildlife and their habitats around Tysoe were many and varied.

Nest boxes for birds, bats and owls were suggested by 13 respondents, closely followed

by tree and flower planting on roadside verges and field margins. Indigenous trees were suggested, particularly elms and oaks.

Leaving some areas `wild` to encourage brambles and nettles in hidden corners was also supported.



Melanie Charles

Creation of a pond or lake was also popular as was making the Village Nature Reserve more high profile.

Less spraying of insecticides was mentioned by 2 respondents.

Suggestions to improve the diversity of wildlife included keeping dogs on leads, hedges to be laid, not flailed, traffic to slow down, stop fox hunting and reduce the number of cats (to protect birdlife).

Setting up a pollen bank was suggested, and planting of more trees with blossom. Older trees should be allowed to decay for insects to inhabit.

Finally it was suggested that a Village Wildlife Group be set up to encourage development of projects and to access grant funding.

Since the findings of the Questionnaire the Community Orchard has been launched.

**Action**

- **Survey results to be discussed by Parish Council**
- **Parish Council to identify any actions for their consideration.**



### Areas in need of additional Environmental Protection.

Respondents to this question obviously had their favourite areas, as there was little consensus.



Tony Winter

There were some comments regarding flooding which have been dealt with elsewhere. The sports field and recreation area were mentioned by two respondents who were not in favour of dogs being allowed off the lead. The grass verges in Main Street were mentioned twice as areas needing careful protection from erosion by vehicles.

The well sites by the Surgery and Back Lane, and stone seats by the War Memorial and Surgery were also seen as in need of protection.

The ridge and furrow land at Tysoe Vale was highlighted as an area to be protected, and one respondent recommended a strong stance against development of any kind.

A suggestion was made to return more of the central village area near the Village Hall to village green as before, to enhance the Village centre.

One comment referred to the parking of large vehicles on Main Street and Middleton Close as spoiling the look of the village.

#### Action

- **Parish Council to identify any actions for their consideration.**

### Litter & Dog Mess

The standard of facilities in the village was rated with a mixed bag of results. The areas needing attention were improvements in the provision of litter bins and dog mess bins, and the areas which were deemed to have improved significantly were: refuse collection, recycling facilities, and the condition of the village's garden hedges/fences and bordering pavements.

#### Action

- **Parish Council to be informed of the requirement for more litter and dog mess bins.**
- **Community litter pickup event.**
- **Litter management provided by SDC.**

### Crime

Serious Crime is fortunately very rare in Tysoe. However a large number of people who responded (48%) commented on dangerous driving in the village. The next significant response (17%) indicated that they had witnessed anti-social behaviour in the village. Not surprisingly the single most proposed crime prevention measures were more police patrols and a local walking/ cycling beat officer, which were suggested by 50% of respondents.

Other suggestions were:-

*"More street lighting, especially in Sandpits Road."*

*"Neighbourhood Watch needs a higher profile"*

*"Under age drinking should be discouraged."*

*"A better response from police when contacted."*

Fortunately 95% of respondents say they feel safe when out and about in Tysoe. The remainder, who did not feel safe, made the following comments. Ten residents commented on dark areas of the village at night, and two would not venture out at all. Sandpits Road near the old shop was mentioned by most.

The alley from Oxhill Road to Old Tree lane was also disliked by younger residents. The Playing field was mentioned twice, one respondent stating that younger children were frightened by teenagers at the new skate park. Speeding cars were also a concern and this was raised a number of times.

**Action**

- Consider the introduction of additional street lighting in the village.
- Comments to be passed on to Neighbourhood Watch for their further consideration.
- Comments to be passed on to the Police for their further consideration.

**Local Services**

**Tysoe Churches**



The survey showed that the 2 Tysoe churches had a dedicated congregation, many of whom attended weekly.

The Methodist Chapel saw 16 regular attendees, rising to 30 once or twice a year. St Mary`s Church saw a weekly attendance of 40, rising to 86 once or twice a year.

In general , both churches saw support from the village, who judged them as being friendly and welcoming environments.

There were a number of specific comments about the churches. A number of respondents

regretted that we no longer have a full-time vicar in Tysoe.

All comments have been passed to the churches for their consideration.

A number of people expressed their disappointment at the departure of Rev. David Knight, and that we no longer have a full-time vicar in Tysoe.



Rev. John Taylor

**Action**

- As a result of the above information being passed on to the relevant parties some changes have been implemented within the two churches.

**Tysoe Post Office**

In response to questions relating to services provided by the Tysoe Post Office, 244 respondents particularly wanted to be able to obtain vehicle tax discs and 162 would like to be able to purchase travel insurance.

Given that the Tysoe Post Office also services a wide area beyond the Parish, the Parish Council has been asked to pass on these findings to the Post Office authorities.

**Action**

- Results of the survey have been passed on to the management of the Post Office for consideration.



### Peacock Inn

A number of respondents were disappointed that our village inn does not provide pub food.

#### Action

- **Results of the survey have been passed on to the pub licensee for consideration.**

### Recycling

The questionnaire was sent out before the new bi-weekly collection service was implemented.

213 residents felt that the current condition of refuse collection was very good or fairly good. 137 residents indicated that they felt it was important for the village to have a community collection point for items not currently collected by charities with 43 feeling that this provision was fairly poor or very poor. Concern was raised about how often the new refuse/recycling systems would operate and where rubbish was being taken, although some felt the new system was a great improvement.

Quote: "providing free recycling of cardboard for businesses"

#### Action

- **Parish Council to investigate community collection point for recycling.**

### Sports and Recreation

Since the last survey was conducted the sports and recreation facilities around the parish have changed and improved enormously, and this questionnaire provided a great opportunity to evaluate the work that has been done, the changes in the parishioners needs, and any gaps that require attention.



The survey asked respondents to state which sports activities they participated in on a regular basis. Swimming was the most dominant activity with 25% of the respondents stating they engaged regularly with this activity. This is no doubt due to the provision of the new swimming pool facility at Shipston which caters well for the area. Golf was the second favourite activity (14%) with Football and Tennis more or less even with 11% of the respondents taking part in these activities.

The usage of the facilities available was measured with footpaths being the most commonly used (25% of respondents) and the public house and church more or less even at 11%. The playground facility also had significant usage compared to the other facilities at 10%, as well as horse riding at 9%.

The availability of information provided to the Parish on recreational facilities is of great importance to ensure that we all know what is available and in order to increase participation. Generally speaking the respondents felt that the information provided kept them fairly well informed (60%) with 20% being very happy with the level of information they receive. 20% of respondents, however, felt that they required more information and were not well informed – so there is still plenty of work to do. Ideas that



have been suggested to aid this process are the provision of a village website that people can access as and when they want to gain information or more details on the activities and facilities available.

### Action

- **Proposal to include village amenities, recreational facilities, and activities on a village website should the website project progress.**
- **Clearer list of recreational facilities and activities in other Parish communication literature and notice boards.**

### Local Business

The survey received responses from over 50 businesses within the parish. Tysoe businesses offer a wide and diverse range of services to Tysoe residents and the general public. Details of these can be found in the Business Directory at the back of the plan. Over 75% of businesses are run from home, with a further 25% using local business premises.

The number of businesses employing staff since the 2000 survey has increased by 11% to over 41%. Even in times of recession new business ventures are being developed in Tysoe. Thirty percent of the businesses that took part in the survey have been in operation for less than 5 years. However Tysoe also provides a good environment for stable long term business with over 40% of the responding companies running for over 11 years.

All the businesses stated that their premises were suitable for their needs, although many felt that business opportunities could be improved in Tysoe by the conversion of redundant buildings, the building of a small Trading Estate or office units.

There were a number of requests and proposals made by the business owners of ways in which their situation could be improved by changes made to the environment in which they are trading. A number of comments are included below:

Publication of business directory.

Availability of serviced offices at low cost

Tax advantages for businesses in countryside

Conversion of redundant buildings to commercial use.

Secretarial support & typing.

Access 'fax machine', photocopier, laminating, binding, facility in the village.

SDC planning department being more in favour of businesses willing to expand.

More police support.

Small trading estate required.

By providing free recycling of cardboard (it is free to householders but not to businesses).

Trade Fair.

Open gardens, plant sales.

Small Office units / workshops within walking distance (possibly cycling) of centre of village.

Local business networking group.

Additional food / convenience shop to encourage competition and variety.

Single building plots made available.

### Action

- **Publish a directory of businesses already established within the parish.**
- **Positive consideration by Parish Council on planning applications for more business premises within Tysoe.**
- **Lobby SDC for free recycling collection for local businesses.**
- **Ensure that SDC Planning authority look favourably at applications for small business premises (especially food outlet /convenience shops).**

### Tysoe children's responses ages 10 and under

The majority of children aged 10 and under find the village safe and quiet. They would happily walk around the village alone without being scared. *"It is in a good environment and a safe place to live."*

The children liked that their school is in the village and that they can walk to school because it is so close, six of the children commented on the school, saying such answers as *"I really like the village school because it is small"*



Melanie Charlies

The children of Tysoe disliked dog owners not clearing up dogs' mess from the paths and the grass.

*"Dog Poo on the pavements and the grass."*

Another dog related problem is that dog owners are not controlling their dogs and keeping them on a lead when they are being walked through the village.

Fast cars are another village problem that needs to be sorted for the safety of not only children

but also other villagers and animals. One child said *"cars go fast around Tysoe"*.

A few of the children commented on feeling intimidated by older children of the village who go to the park. One commented "too many older kids hanging around the little kids area".

Most who responded would like a bigger park with additional play items "more things to plays on in the park". From the twenty three children that gave their answers to the questionnaire seven said that they wanted changes made to the parks play area.

When asked to express a wish list of activities which they would like to see in the village, there was not a clear consensus. Activities ranged from cross country running to a pet club with no clear favourite.

With regard to indoor activities there was a clear wish for brownies, beavers and/or scouts to be held in the village. There was also strong support for drama and dancing clubs (7 out of 22 responders were keen for these).

#### Action

- Parish Council to identify any actions for their consideration.
- Pass the remaining responses to WCC Youth Services, and other youth and volunteer organisations.

### Young persons' Responses ages 11- 18

The average age of young people in Tysoe is 16 years old. Of the 88 young people in the village who responded, 47 were male and 39 were female.

When asked about young peoples' most enjoyable sport, many gave more than one answer. In total there were 282 responses. There were many popular answers ranging from:

Cycling as the most popular answer with 50 young people enjoying the sport.

Tennis was another favourite with 36 young people enjoying playing the game.



A further 36 young people enjoyed playing football.

When asked what they liked to do in their free time 64 enjoyed watching television and 67 enjoyed working on computers and the internet. 18 gave alternative answers that ranged from horse riding to swimming and reading. The least popular answer from the ideas given was drama with 6 of the 88 young people enjoying doing this in their free time.

With regard to the setting up of a Youth Council, of the 82 young people that answered the question, 63 said that they thought that it would be a good idea. When it came to interest in joining a Youth Council in Tysoe, 24 young people expressed an interest.

Most young people see Tysoe as a safe place to live. Only 5 out of 81 expressed safety concerns and these mostly concerned out of control dogs. *“Stop stupid ignorant dog owners letting their out of control dogs chase you and jump at you when you ask them not to”*. It was also felt by these few that dog owners not clearing up dog mess was becoming a problem in the village.

83 responded to a question regarding facilities in the village. 55 said there were not enough, 36 gave ideas for changes and 28 thought that facilities were adequate.

Of the 36 suggestions, quite a number were looking forward to the opening of the skate park, (which has opened since the questionnaire was distributed). Other ideas were;-

A youth group for young people, (7 of the 33 young people want a group for young people).

Another idea given by 5 young people is to have a cafe in the village where they can go with their friends and hang out.

3 of the 33 young people want cricket nets in the park for all year round and also 2 young people want a concrete base around the basketball net.

### Action

- Parish Council to identify any actions for their consideration.
- Pass the remaining responses to WCC Youth Services, and other youth and volunteer organisations.

### Housing Needs

358 residents responded to the question about Future Housing Needs. The findings show support for low cost housing for young and elderly in the village, and of course that local connection is most important to many of our residents.

159 did not have any future requirement, but 59 did put affordable homes for young people at the forefront while 41 supported affordable rental homes. 64 supported sheltered/affordable smaller homes for the elderly and disabled. Open market homes had less support.

The question “Do you expect a member of your household to require any of the following in the next 5 years”? gave the following results:

Affordable homes for local young people	59	16.5%
Affordable rental	41	11.5%
Sheltered accommodation for local people	30	8.4%
Affordable homes for local elderly people	23	6.4%
Small open market family homes	22	6.1%
Affordable homes for local disabled people	11	3.1%
Large open market family homes	9	2.5%
Open market executive homes	4	1.1%
None of the above	159	44.4%
<b>Total</b>	<b>358</b>	<b>100.0%</b>



## Tysoe Parish Council

Parish Council - comments from questionnaire

Although there were no specific questions about the Parish Council, there were a number of comments in the questionnaire feedback specifically about the Parish Council and the way that it is run. Most of the comments relate to communication of issues and actions rather than the decisions made by the council. A selection of feedback comments are:-

Display all ongoing Planning applications in the reading room.

Why not a Posting Box placed in one of the shops where villagers could place a 'note' with detail of village problems (Failing lights; Potholes; Covered Signs etc). These problems could be actioned monthly when the box is opened at the Meeting. Currently it takes far too long to resolve such issues.

The Parish Council should not make donations to begging letters however worthy they are. It is not in their remit. Parish Precepts money is requested by the Parish Council for essentials within the Parish.

Can there be one person to refer to for any problems in the Village? If they already exist, why is it not publicised?

I would like more explanation and transparency on the Tysoe Utility Estate Charity remit within the Village. Especially its land and property holdings; and what benefits it brings to the Village and how the Trustees are appointed.

Parish Council should raise its profile and make more effort to communicate activities and priorities. The Tysoe Plan needs an implementation group to help facilitate the various actions and activities promoted.

### Action

- **Parish Council to propose additional communication methods for information flow both into and out of the PC meetings. (ie Issues box, Published PC contact details, email address etc.)**

- **Parish Council to investigate the need for additional local publication of planning applications.**

## Future Developments

These findings support the questions regarding support for future development in the village. Of 298 respondents, 93 supported groups of up to 5 homes, while 91 supported single dwellings. Larger developments of between 10 and 20 houses had fewer supporters. 77 respondents said they would not support any future development at all.

As part of the development of any future housing in Tysoe the question was posed about the desire for a Village Design Statement. Of the 250 who responded to this question 206 thought it was important to produce a VDS which would inform future development and ensure they are in line with local character and distinctiveness. More importantly, 44 would be interested in being part of a group to produce a VDS.



Whilst the above may be considered as quite predictable, the survey does give us (the community) the opportunity to get the message across to the people responsible for assessing planning applications. It is quite clear from the responses that the vast majority of people in the parish see either no need at all for more development or only the need for affordable and rental homes. This is not consistent with the fact that the two affordable homes in Back

Lane remained empty for so long after the other houses had all sold commercially.

**Action**

- Report all findings to PC and SDC who will arrange a Housing Needs Survey in the village.
- Contact volunteers to set up a group to create a Village Design Statement. (VDS)

**Projects and Improvement Ideas**

**Additional resources for the village**

The questionnaire asked respondents for their views on which facilities they would like to see in the village that are not currently provided. The most popular facility mentioned was a mobile cinema (24%), with an adult education facility second (17.5%) and nature reserve third (16%). Other requirements such as an art & crafts workshop (12%) and an expanded playground facility (9%) were fairly significant requests. Other requirements such as a teenage youth club, senior citizens club, and drop in community centre all scored quite low on an individual basis – but if you were to group these together as a more general facility servicing each of their requirements then the level of respondents requesting this type of facility was 10%. The danger in asking for respondents' views on specific age related needs is that the responses will tend to be low in relation to the whole sample – so we have to be careful that the specific needs of one section of our community are not overlooked, and in this case could be grouped with other age groups' requirements in order to meet a wider need.

**Action**

Proposal to the Parish Council for the provision of

- a mobile cinema,
- increased adult education facilities to include arts and crafts workshops,
- and a review of the possibilities of a

nature reserve and expanded playground.

- Separate requirements for specific age groups will need to be investigated further by the Parish Council through more targeted research.

**Proposed project - Village Welcome Pack**

The suggestion of a Village Welcome Pack as a project was broadly supported, 87 of respondents saying it was important to them, whilst 78 stating it was fairly important. "It will be very useful to new and existing residents" was a typical comment.

**Action**

- A group to be set up through the Parish Council to produce a pack of local information for residents.

**Proposed project - Evening Event in the Tysoe Show Marquee**

Over a hundred residents responded positively to an evening event with 37 prepared to be part of a volunteer team to organise such an event. Of those interested, over 90 % suggested live music or a barn dance. Extended use of the Flower Show Marquee would reduce rental cost to both (or more) events.



**Action**

- To organise such an event would require an Action Group to take on the project and responsibility of the marquee at the end of the Flower Show drawn from the volunteers and/or involvement of an existing organisation such as the Social Club.

### Proposed project – Regeneration of the Tysoe Red Horse

Following increased public awareness of the history of the Saxon Red Horse, a significant number of respondents (154) felt that the Red Horse should be restored to its original state.

To quote two respondents “Bringing the Red Horse back to Tysoe should be a particular priority and would bring a number of benefits to the village, including to the local businesses, as well as civic pride”. “The return of the Red Horse would really put the village and the Vale back on the map, and also be a massive boost to community pride”.

#### Action

- The land owner would be approached and asked to consider a restoration project.

### Proposed project – Restoration of the Tysoe Windmill



Lucy Winter

An even larger number of respondents would like to see restoration of the Windmill sails. Whilst the windmill is not technically part of the parish of Tysoe it is clearly very important to a great many people within the parish. It is not within the scope of either the Parish Plan committee or the Parish Council to directly control the future upkeep of the windmill but the results of the survey can be passed on the owners for their consideration.

#### Action

- The results of the survey would be forwarded to the Earl of Northampton’s Estate.

### Proposed Project - Community Notice Board.

The existing notice boards clearly provide an important source of information for residents of the parish. Together, the Parish Notice Board on the Village Green, along with the school, pub and shop notice boards were all used regularly by respondents as a source of information on village communities, and it was noted that notice boards also exist on the Village Hall and the cemetery gates.

While serving as an important information source many respondents stated that the existing information boards could be improved. The location of the different notice boards will in some cases help disseminate information, while at the same time potentially diluting the information available and creating some confusion as to the best source of information on local activities and events.

It was noted that little information is available on the existing notice boards which is targeted at visitors as well as residents, and more could be made of the information boards to publicise local businesses e.g. opening hours, local walks and points of historic or environmental interest in the parish. Consideration should be given to the location of one or more community notice boards.

#### Action

- Review location and content of existing information boards.
- Identify key locations for information to be made available.
- Consider rationalising existing and introducing new community information boards in the most accessible locations within the parish.
- Prepare information on local businesses and features of interest to be made available on the community notice board(s).



### Proposed Project - Local Produce Market

Respondents expressed significant support for Tysoe to host a regular local market where locally produced food and crafts would be available for sale. More than 85% of respondents stated they would support a local market as a shopper, and as many as 26 respondents (8%) expressed an interest in making produce for a regular local market. Furthermore, one respondent expressed a keen interest in helping to organise a local farmers' market.

Some concern was raised that a local market may serve to provide undue competition to the existing shop, post office and butcher's and that consideration should be given to encouraging these existing retail facilities to serve as an outlet for local produce.

Only 10% of respondents felt that a weekly market would be viable, with the vast majority stating that they would support a monthly market (48% of respondents) or seasonal market or one which was held at the Flower Show and other regular village events (42% of respondents).

#### Action

- **Contact Council and organisers of other local markets to get guidance on setting up a local market.**
- **Undertake a survey of potential suppliers.**
- **Prepare a marketing and business plan for holding a market.**
- **Run a 'pilot' event to test local interest.**
- **Consult existing retail outlets and identify opportunities for providing outlets for local produce.**

### Proposed Project - Tysoe community website

Our survey says that over 70% of the homes in Tysoe have access to the internet. In addition, 70% of respondents said that they would make regular use of a community website.

Some people who responded said that they would also like to contribute to a website as well as getting information from it. The survey showed that there are a significant number of companies, clubs and committees currently active within the village so there should be plenty of potential contributors for a website.

According to the survey 30% of the working population in Tysoe are now working in and around Tysoe, compared to 23% when the last survey was conducted in the year 2000. It is clear that home-based business and small office units are an increasing trend in Tysoe. Whilst it is clear that many specialist companies will not necessarily be of interest to local shoppers it stands to reason that they may all benefit from having at least a listing on a community website.

As far as content for a website goes, there were many suggestions made in the questionnaire replies.

Calendar of forthcoming events	73%
Contacts list / directory of local businesses and groups	32%
Clubs & Organisations	16%
Amenities/ facilities	15%
Local news	12%
History of the area	9%
Classified ads (for sale & free items)	7%
Offers / requests for help & services	7%
Timetables / opening & closing times etc.	7%
PC & other meeting minutes	6%
Link to church website	5%
Maps / Footpaths & places of interest	5%
Crime & Neighbourhood Watch	4%
Rubbish collection	3%
Link to schools websites	1%

According to the responses to the questionnaire nearly a third of people go to the Tysoe Record for information on news and events within the parish. There are still many people who do not have access to the internet or would still prefer the paper copy delivered to their home as it is today.

A number of the responses suggested that we should try to create a website similar to the Brailes Community website. This was seen as an extremely good benchmark .

#### Action

- List of Volunteers and potential contributors have been passed on to the Parish Council.
- Organise a public meeting to recruit a working group to begin the process of creating a website.
- Contact the editors of the Tysoe Record and the Church website to establish common aims and shared content potential.

#### Proposed project – Community First Responder

The question about a First Responder (defibrillator) in the community resulted in 90% of people either agreeing or strongly agreeing that this would be a good idea. A number of people have volunteered to get involved in this project.

Oxhill 1st responder team has offered to run a workshop which also covers Tysoe at present.

#### Action

- List of Volunteers have been passed on to the Parish Council.
- Create a working group to begin the process of setting up a First Responder in Tysoe.



Ben Cherry





**A selection of aerial photographs of the village**





## Action Plan and Next Step

Issue (theme)	Description	Action	Lead responsibility	Partners	Priority (according survey responses)	
Crime	Additional Street lighting	Additional street lighting.	Tysoe Parish Council		Medium	
		Neighbourhood watch further consideration.	Neighbourhood watch		Medium	
Roads & Traffic	Parking	Police response to questionnaire.	Warwickshire Police		Medium	
		WCC/PC to discuss the preparation and implementation of a Green Travel Plan with the School.	Tysoe Parish Council		High	
		WCC/PC to consider further restrictions to parking in hazardous areas.	Tysoe Parish Council		High	
		PC to consider dedicated signage or requests on Notice board to encourage reasonable parking by visitors to the village and users of the sports field.	Tysoe Parish Council		High	
		PC and WCC to consider introducing appropriate intervention to protect grass verges (e.g. use of Hornton stone rather than signage).	Tysoe Parish Council		High	
		PC to consider the need to extend hard surface parking next to fire station to cater for village events and to encourage greater use of this area to reduce on-street parking.	Tysoe Parish Council		High	
		Consider putting down speed trackers in highlighted areas to identify factual basis behind perceived issue of speeding vehicles.	Tysoe Parish Council		Medium	
		Where speeding traffic is identified as a persistent and significant problem, PC/WCC to consider introducing low intervention measures such as those described above. Further consultation to be undertaken on the most appropriate measures once problem locations identified.	Tysoe Parish Council		Medium	
		Road Condition	WCC to disseminate details of the road maintenance programme and the standards expected in rural areas.	Warwickshire County Council	Warwickshire County Council	Low
			PC to consider lobbying WCC for improved road surfacing in the parish and to identify the priority locations.	Tysoe Parish Council	Warwickshire County Council	Low
Street lighting	PC to consider lobbying WCC to add Kineton Road to gritting schedule.	Tysoe Parish Council	Tysoe Parish Council	Low		
	PC to review street lighting in the village.	Tysoe Parish Council	Tysoe Parish Council	Low		
Public Transport	Results of this survey will be passed on to the local bus service provider to be considered in future service planning.			Low		
	Results of this survey will be passed on to the Shipston Link service provider to be considered in future service planning.			Low		

## Action Plan and Next Step (cont'd)

Issue (theme)	Description	Action	Lead responsibility	Partners	Priority (according survey responses)
Roads & Traffic (cont'd)	Bus Shelter	PC to investigate the requirements for and the location of a bus shelter.			Low
		Pass on the results of the survey to Johnsons (Bus company).			Medium
Local Environment	Flooding	Publish a detailed response about flood prevention measures to be implemented in the near future.	Tysoe Parish Council		High
	Footpaths & Open spaces	Wider information regarding the mapping of the footpath system could feature on a Parish website, Notice Board and/or in the Parish Welcome Pack.	Tysoe Parish Council		Medium
	Historic Tysoe	Recommendation for a list of historic sites to be featured in the proposed Parish website and Welcome Pack.	Tysoe Parish Council		Low
	Diversity of Wildlife and their Habitats	Survey results to be discussed by Parish Council. Parish Council to identify any actions for their consideration.	Tysoe Parish Council		Low
	Litter & Dog mess	Parish Council to be informed of the requirement for more litter and dog mess bins.	Tysoe Parish Council		Medium
		Community litter pickup event.	Tysoe Parish Council		Medium
		Investigate cost of litter management provided by SDC.	Tysoe Parish Council		Low
Local Services	Churches	Results of survey have been passed on to local church leaders.	Church Leaders		Medium
	Business Directory	Publish a directory of businesses already established within the parish.	Parish Plan Committee		High
		Consideration by Parish Council on planning applications for more business premises within Tysoe.	Tysoe Parish Council		Medium
		Ensure that SDC Planning authority look favourably at applications for small business premises (especially food outlet / convenience shops).	Stratford District Council		High
	Tysoe Post Office	Results of the survey have been passed on to the management of the post office for consideration	Post Office Management		Medium
	Peacock Inn	Results of the survey have been passed on to the pub licensee for consideration.	Pub licensee		Medium
	Recycling	Parish Council to investigate community collection point for recycling.	Tysoe Parish Council		Medium
Sports & recreation		Lobby SDC for free recycling collection for local business.	Tysoe Parish Council		Medium
		Proposal to include village amenities, recreational facilities, and activities on a village web site should the web site project progress.	Tysoe Parish Council		Medium

## Action Plan and Next Step (cont'd)

Issue (theme)	Description	Action	Lead responsibility	Partners	Priority (according to survey responses)
Parish Council (cont'd)	Youth Services	Clearer list of recreational facilities and activities in other Parish communication literature and notice boards. Proposal to the Parish Council for the provision of a mobile cinema, increased adult education facilities to include arts and craft workshops, and a review of the possibilities of a nature reserve and expanded playground.	Tysoe Parish Council		Medium
		Parish Council to identify any actions for their consideration. Pass the remaining responses to WCC Youth Services, and other youth and volunteer organisations.	Tysoe Parish Council		Medium
		A group to be set up through the Parish Council to produce a pack of local information for residents.	Tysoe Parish Council		Medium
2. Projects and Improvement Ideas	Village Welcome Pack	Organise an Action Group to take on the project and responsibility of the marquee at the end of the Flower Show.	Tysoe Parish Council		High
	Evening Event in the Tysoe Show Marquee	The land owner would be approached and asked to consider a restoration project.	Tysoe Parish Council		High
	Regeneration of the Tysoe Red Horse	The results of the survey would be forwarded to the Earl of Northampton's Estate.	Tysoe Parish Council		High
	Regeneration of the Tysoe Windmill	Review location and content of existing information boards.	Tysoe Parish Council		Medium
	Community Notice Board	Identify key locations for information to be made available. Consider rationalising existing and introducing new community information boards in the most accessible locations within the parish.	Tysoe Parish Council		Medium
		Prepare information on local businesses and features of interest to be made available on the community notice board[s].	Tysoe Parish Council		Medium
		Contact Council and organisers of other local markets to get guidance on setting up a local market (e.g. licensing, health and safety etc.).	Tysoe Parish Council		High
		Undertake a survey of potential suppliers.	Tysoe Parish Council		High
		Prepare a marketing and business plan for holding a market. Run a 'pilot' event to test local interest.	Tysoe Parish Council		High
		Consult existing retail outlets and identify opportunities for providing outlets for local produce.	Tysoe Parish Council		High



## Action Plan and Next Step (cont'd)

Issue (theme)	Description	Action	Lead responsibility	Partners	Priority (according to survey responses)
2. Projects and Improvement Ideas (cont'd)	Tysoe community website	List of Volunteers and potential contributors have been passed on to the Parish Council.	Tysoe Parish Council		High
		Organise a public meeting to recruit a working group to begin the process of creating a website.	Tysoe Parish Council		High
		Contact the editors of the Tysoe Record and the Church web site to establish common aims and shared content potential.	Tysoe Parish Council		High
	First Responder (defibrillator)	List of Volunteers have been passed on to the Parish Council.	Tysoe Parish Council		High
		Create a working group to begin the process of setting up a First Responder in Tysoe.	Tysoe Parish Council		High
Housing	Housing Needs Survey	Report all findings to PC and SDC who will arrange a Housing Needs Survey in the village.	Tysoe Parish Council	Stratford District Council	Medium
		Contact volunteers to set up a group to create a Village Design Statement.	Tysoe Parish Council		Low

## Tysoe Parish Plan – Business Directory

Name	Business Type	Address	Tel No	Website
Featherbow Woodcraft	Bespoke kitchens and bathrooms	The Old Barn, Hillside Farm, Lighthorne	01926-651133	<a href="http://www.featherbow.co.uk">www.featherbow.co.uk</a>
PDR Furniture	Furniture Design/ Manufacture in oak	n/a	01295-680149	<a href="http://www.Pdrinternational.co.uk">www.Pdrinternational.co.uk</a>
Martins of Tysoe	Coach Hire, holidays and excursions	20 Oxhill Road, Tysoe. Warwick. CV35 0SX	01295-680642	N/A
Hayward Smart Architects	Architects	The Studio, Church Farm House, Main Street, Tysoe	01295-688388	<a href="http://www.hsarchitects.co.uk">www.hsarchitects.co.uk</a>
Ringrose & England	Garden design	7 Church Farm Court, Tysoe	01295-688476	<a href="http://www.ringrose-england.co.uk">www.ringrose-england.co.uk</a>
John Tongue	Building Contractor	Hillview Cottage, Peacock Lane, Tysoe	01295-680469	N/A
Traidcraft	Voluntary fair trade	The Willows, Badgers Lane, Tysoe	01295-680031	<a href="http://www.traidcraft.co.uk">www.traidcraft.co.uk</a>
Norman Oakley ACA	Chartered Accountant	12 Windmill Way, Tysoe	01295-688136	N/A
Training 24/7	Training in first aid	1, Avon Avenue, Tysoe	07929180579	<a href="http://www.training24-7.co.uk">www.training24-7.co.uk</a>
English Ironwork	Garden furniture (wood and metal)	Chelmscote House, Shipston Road, Tysoe CV35 0TR	01295-680569	<a href="http://www.englishironwork.co.uk">www.englishironwork.co.uk</a>
James Thomson	Gliders and framers	Old Estate Office, Shipston Road, Lower Tysoe	01295-680855	N/A
Varmore Garden Solutions	Gardening Services	5, Avon Avenue, Tysoe, Warwick, CV35 0SP	01295-680700	
Penny Varley Ceramics	Pottery	5, Avon Avenue, Tysoe, Warwick, CV35 0SP	01295-680700	<a href="http://www.pennyvarleyceramics.co.uk">www.pennyvarleyceramics.co.uk</a>

## Tysoe Parish Plan – Business Directory (cont'd)

Name	Business Type	Address	Tel No	Website
Auto Best Buy Ltd	Car Care retail	Unit 6 Mead Park, Thorpe Mead , Banbury,OX16 4RY	02195-680977	www.autobestbuy.co.uk
Ecommnet Ltd	Computer services business	762 Cherwell Business Park, Southam Road, Banbury, OX16 2SP	01295-680782	www.ecommnet.co.uk
Cherry Branding Ltd	PR and Marketing	Orchard House, Back Lane, Tysoe	01295-680793	www.cherrybranding.co.uk
Showhomes	Decorators	8 Cherry Orchard, Shipston on Stour	01608-661686	www.showhomes.co.uk
PH Goodman and Son	Carpeting and flooring	Saddledon House, Tysoe, CV35 0SE	01295-680318	
Progardens Ltd	Garden Design and Maintenance	The Nurseries, Quarry Road. Hornton	01295-678877	enquiries@progardensltd
Tysoe Butchers	Butchers	Main Street, Tysoe	01295-680226	
Tysoe Post Office	Post Office and florist	Main Street, Tysoe	01295-680632	
Tysoe Pre-School	Pre-school, before and afterschool and holiday clubs	The Old Fire Station, Main Street, Tysoe. CV35 0SR	01295-680624	www.tysoepreschool.org
New Looks	Hair and Beauty Salon	Main Street, Middle Tysoe, CV35 0SE	01295-680671	



## Tysoe Parish Plan – Business Directory (cont'd)

Name	Business Type	Address	Tel No	Website
Mary Dowler	Solicitor		01295-251234/688319	marydowler@aplins.co.uk
Keith Brooks	Electrical Contractor	26 Middleton Close, Tysoe, Warwickshire CV35 0SS	01295-680738	
Mick Shephard	Windscreen Repairs	3, The Leys, Oxhill, Warwick CV35 0QX	07976298228	
R. Locke and Son	Funeral Directors		01295-680251	
The Peacock Inn	Public House	Main Street, Tysoe	01295-680338	
Costcutters	Convenience Store	31 Main Street, Tysoe	01295-688333	
Hortec Grow With Technology	Horticultural Machinery and Plants	Orchard Farm Nursery, Lower Tysoe	01295-688422	
Pete Randerson	Carpets and Flooring	24 Main Street, Tysoe	01295-680330	
Simon Forrester Associates	Copywriting and Marketing	Greenacres Studio Lower Tysoe	01295-688459	



*'And Tysoe's wondrous theme, the  
martial horse,  
Carv'd on the yielding turf, armorial sign  
Of hengist, Saxon Chief! Of Brunswick now,  
And, with the British Lion joined, the bird  
Of Rome surpassing.'*

Poet Jago from a publication Rambles Round by George Miller printed at the  
Roundwood Press, Kineton in 1967

