

FEBRUARY 2021

No: 812

Annual Subscription £2.50



Photo credit: Olga Subach

In this Issue:

- **New for 2021 - 'My First Car' memories**
- **Tysoe's Wildlife Friendly Parish initiative**
- **Bards are invited to take part in another Poetry Challenge**
- **A magical winning entry for the Village Shop Competition**
- **A valedictory piece from our outgoing Editor**
- **. . . . And MORE, MUCH MORE!**

FAREWELL FROM OUR RETIRING EDITOR

It has been an honour and a real delight for the last decade to follow in such illustrious Editorial shoes as Ernie Farbrother's and Margaret Gibbs'. I hope the readership agree the Record is a better read now than it was at the start of my tenure. But, I assure you, it was little to do with me, a change hating technophobe!

The current success of the Record is down to the hard work and perseverance of Mary Thornhill, Sue and Gerald Hart, Paul Dowler, Beverley Thorpe and Shirley Cherry and her new team. Thank you all for pushing me into the twenty first century. I'm sure I have omitted other names, not least the distributors, for which I apologise. Even retiring Editors are spatially confined for their articles!

Record production is a team effort and I thank everyone who has contributed to its production in whatever way during my tenure. I encourage you all to offer your services to ensure its successful continuance. Many skills are required to make it an attractive publication not least criticism or comment on its content. Without user input it ceases to be representative of the readership.

And so, with apologies to Humphrey Lyttelton, as the editorial of time meets the word count of fate and the e-copy of progress freezes and won't re-boot, I notice it's time to depart.

David Sewell

MEET THE TEAM

EDITOR: Shirley Cherry
Orchard House, Back Lane, Tysoe
Tel: 01295 680793

EDITORIAL & ADVERTISING:
Sue Weatherhead

TREASURER: Carol Clark

DISTRIBUTION COORDINATOR:
Jude Canning

HOW TO GET IN TOUCH

Email your copy to
tysoercord@gmail.com

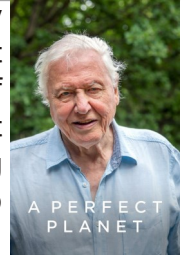
Message us on Facebook
@tysoerecord

Post hard copy to Orchard House,
Back Lane or 7 Windmill Way

Contact one of the team and we will
write it down for you. **March Issue
deadline is 17 FEBRUARY 2021.**

A PERFECT PLANET

The latest BBC series 'A Perfect Planet', narrated by Sir David Attenborough, focuses on the forces that shape our planet. It is amazing! The sheer variety of life, both terrestrial and marine, is truly remarkable, but as Sir David points out, we are witnessing environmental change as never before and the need to TAKE ACTION has never been more urgent.



Living where we do in idyllic rural Tysoe it's tempting to think that nature is doing OK, but looks can be deceptive. There has been an alarming decline in once familiar species such as hedgehogs, field mice, many insects and birds. The RSPB estimates that there are 40 million fewer birds in the UK since the 1960s, a staggering statistic. Michael Gibbs remembers when peewits (lapwings) used to outnumber gulls following the plough.

Britain's record for protecting its own flora and fauna is amongst the worst of the G7 nations. Hence the launch of TYSOE'S WILDLIFE FRIENDLY PARISH which aims to encourage greater biodiversity, protect wildlife, plants and trees to help reverse this decline – see p 20-21. When you create 'space for nature' it will return, as has been demonstrated by the wonderful resurgence of flora and fauna at the Sun Rising Natural Burial Ground in a short period of time.

The Parish Council is supporting more wildflower areas in the village and 'No Mow May'. But each and every one of us has a responsibility to do our bit to help. Cutting down on waste, being rigorous about recycling, trying to minimise our reliance on plastics, buying local and seasonal produce from our farmers, producers and village shop, making good choices about the food we buy and generally thinking about limiting our carbon footprint.

Let's make 2021 a year for positive change for ourselves, for our planet and for the wonderful creatures with which we share it and try to make Sir David proud.

The Editor



Do you look after someone? If you look after a family member or friend because of illness, frailty, or disability then you are a carer. You might never have considered that this label applies to you, but it's important because there is support available for you. Even before Covid-19, many carers experienced feelings of isolation, depression, fatigue, poor health, and financial pressures. Rural carers may struggle to reach shops and services because of transport difficulties.

Carers4Carers is a warm-hearted, friendly group and if you are a carer we would love to hear from you. Run by volunteers who all have experience of caring, we offer coffee, chat, speakers, and workshops to develop caring skills or promote wellbeing. Our Companionship Group is led by qualified care assistants and volunteers and runs alongside the carers' meeting offering activities for loved ones. There is no charge for either group.

Our monthly meetings in Kineton Village Hall are suspended due to Covid-19, but we continue to offer a newsletter, telephone support and a virtual coffee morning. New and existing members are always welcome. [For more information call Gillian on 07947 893504](tel:07947893504), [email kcarers4carers@gmail.com](mailto:kcarers4carers@gmail.com) www.carers4carersonthefosse.org.uk



Tysoe Post Office

At the heart of the village

Post office services (incl. free banking, cash withdrawals, Euro's/ travel money, phone top-ups). Gifts (stockists of Gisela Graham, East of India, Salle Belle), cards and stationery. Local & (imported) flowers & plants. Delivery local/nationwide.



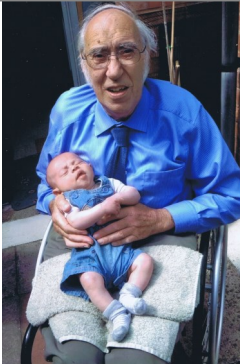
Find us on Main Street
01295 680632

Original **Est**
business **1866**

CONWAY HOPKINS LIFE STORY OVERCOMING DISABILITY



At 14 years old I got a part-time job at the local garage. At 15 I lost my dad and at 16 I lost the use of both legs from a tumour in my spine. At the Queen Elizabeth Hospital in Birmingham I was operated on and treated with radium, which damaged my spinal cord. After 14 months in hospital I returned home



to Tysoe, having been told I would never walk again. But I proved them wrong, after a three year struggle I managed to walk with calipers and walking sticks.

I needed an income, so I became a shoe repairer and appointed agents in surrounding villages to take in the shoes. Next, I opened a shop selling shoes and drapery. Then out of the blue, my old garage boss came and asked if I wanted to buy the garage off him. By then I had two daughters and a son and was buying a house, but I extended the mortgage to cover the garage.

The new MOTs forced many small garages to fold so my partner and I decided to move into coaches. We secured contracts with Warwickshire County Council for school transport. I borrowed £200 from the bank to buy a second-hand coach. After three years we had eight coaches and were doing 14 school runs a day, using part-time drivers.

I really wanted to drive a coach. After a battle with the Department of Transport in Birmingham to get a licence, I had a coach fitted with hand controls and an automatic gear box. Before approving the conversion, I had to pass a medical. Success! I was the first ever disabled driver to drive a coach.

The moral of my story is, “don’t give up if you become disabled. Life is what you make it. I could go on and fill a book, there is more to tell, and my story is not over yet.”

Conway Hopkins

Thomas Fox

Landscaping & Maintenance



Garden Maintenance • Mowing
Strimming • Hedge Cutting • Pruning
Leaf Collection • Digging over plots
Patio Jet Wash • Border Maintenance
Water Features • Paving • Fencing
Tree Surgery Services

NEW- Green Waste Removal and Recycling

**FULLY INSURED,
PROFESSIONAL
AND RELIABLE
SERVICE**

office@thomasfoxlandscaping.co.uk
www.thomasfoxlandscaping.co.uk

**CALL NOW
TO ARRANGE A
FREE QUOTATION**

01295 680691



POETRY CHALLENGE - REISSUED FOR 2021!

In honour of absolutely nothing, but in order to stay positive during “Lockdown 3 - The Trilogy”, we invite you to turn your hand yet again to writing some more poetry. How could we not when we had so many wonderful entries last year? And this time, with Spring just around the corner (yes, honestly!), we thought that the theme should be nature and all its wonders.

So.....

If you can think up words wot rhymes*
And fills no more than 39 lines
'Bout Mother Nature - good or bad
Make it funny, factual or sad.



About the bees, about the birds,
About the beetles that live on turds,
Nature in Tysoe or from afar,
Or where you walk without your car.



All the beauty that is around,
Up in the sky or on the ground,
Write about your hopes and fears
For Mother Nature over the years.

Put your thoughts upon your paper -
In these hard times we need a caper,
Then send them to the editing team -
(They're not as scary as they seem).



The deadline - February end** -
May drive you round a little bend,
But fret thee not and just have fun,
And we will chose the number one
To publish in next month's edition -
Your very own Nature Rendition!

* clearly we can't

** you try finding a rhyme for 'February' or 'the 28th'!



www.rural-works.co.uk

Trees

Crown reduction, shaping & thinning
Removals & planting
Stump grinding & chipping
Help with applications on TPO'd trees
Advice on trees in conservation areas

All work carried out to British standard 3998:2010 tree work recommendations

£5m Insurance

Contact us for a quotation:

01295 811807 / 07738 521861
rural-works@outlook.com

National Trust

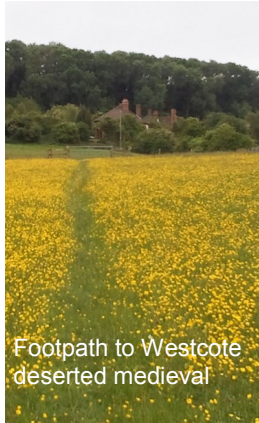
A breath of fresh air
at Upton House

6 February - the winter walk is open 7 days per week
Please book before visiting and follow the guidance

Upton House and Gardens
nationaltrust.org.uk/upton-house-and-gardens

© National Trust 2020. Registered Charity no. 205846
Photography © National Trust / Jessica Bentley

THE MAKING OF TYSOE PROJECT: WESTCOTE



The aims of the Making of Tysoe Project include trying to understand how Tysoe parish came to be as big and diverse as it is now, with its three separate settlements, two deserted medieval villages, and at least 6 manors. Westcote, far flung on the borders of Radway is one of these deserted villages, Hardwick being the other.

Westcote, on the Edge Hills as they were called until the early 20th century, had 15 families in 1279 and still had 12 families after the plague in 1352 but was deserted by 1444.

The hamlet was abandoned mainly because of the rise of sheep farming, which requires vastly less labour than arable cultivation. This process was repeated all over the Midlands. Westcote is one of the best preserved deserted villages in Warwickshire. Its steep location, together with its recent history of multiple ownership, has protected it from modern industrial farming methods. Access to Westcote remains difficult, as some delivery drivers have found to their cost!

Hardwick on the flat land below has not survived, its earthworks visible on post war aerial photos now ploughed flat. In Westcote's fields one can trace the outlines of at least a dozen structures, mostly houses. The hollow way which winds half way up the hill joined a track under the wood which linked Sunrising Hill with King John's Lane. Part of this track is a public footpath which passes Westcote Manor. The legacy of the medieval settlement can be seen in the lush crop of nettles; the enhanced fertility caused by nearly half a millennium of occupation still persists after another half a millennium. Although difficult to access by modern machinery there is a public footpath through the middle of the medieval hamlet's earthworks. From the bottom of King John's Lane it's a stiff climb but the views are worth it, and although you can't see Tysoe village the evidence of the lost Westcote hamlet is clearly visible.

David Freke



CROFT PIES

Local, homemade, Aga baked pies, savouries and meals.

Prices start from £2.85 for individual servings. Other sizes available on request.

Event catering also available, please call to discuss.

Contact Jane Gardner in Lower Tysoe

Phone: 01295 680683 or 07766 706906

Email: croftpies@gmail.com



HAPPY HEREFORDS



It's calving time at Herberts Farm with 10 new burgerettes on the ground in the last week - the cows are keeping us busy.

Friday Night Take-Away's and Sunday Morning Breakfast Club are back - a big thanks to all of you who continue to support our little business during these testing times, we are currently on a trip around the world with our weekly specials inspired by warmer climes to get us through the dreary winter months, join us 6-8pm every Friday, pre-booking a pick up slot gets you to the front of the queue



Thank you for your support.
call Kate 07904445544 or Monica 07770770976

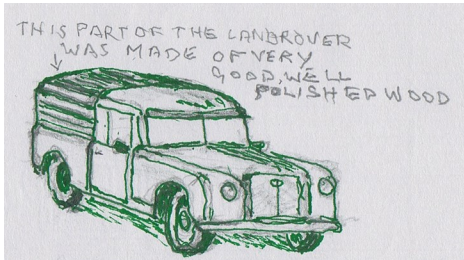


NEW FOR 2021 - 'MEMORIES OF MY FIRST CAR'

We are kick-starting (or perhaps that should be 'hand-cranking') a new monthly feature about 'My First Car'. Please feel free to send us your reminiscences (fond or otherwise) about your first set of wheels, preferably with a photo or two, so we can admire the marque! Here are a couple to get us on the road:

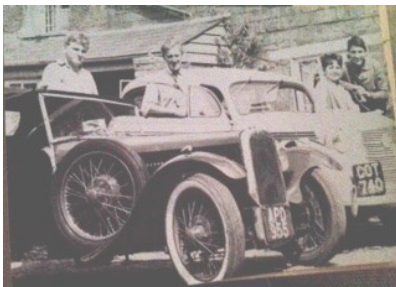
John Baylis - Land Rover

Father's Riley played a key role in my most junior car days which involved cleaning it with a rag and bucket of soapy water, hosing it down and then polishing. It was hard work and it had to be well done as the inspection was tough! There would be no trip to the cinema unless it shone like brand new. Therefore I was glad when I had a car of my own, a Land Rover, which could remain dirty!



When not used at the farm, I had fun gathering friends for outings to the flicks and to Silverstone Races where we made a scaffolding kit, so we could all sit high on top watching the races.

Clark Spencer—BSA Scout



I purchased my first car from Pillerton Garage in 1959 for £27, having managed to get £3 knocked off the price! It was a 1933 BSA Scout, a three wheeler car, which had a quite rare front wheel drive for its time. I believe it's still around somewhere!

Do get in touch and tell us about your own car stories! We'd love to hear them. See our contact details on page 2.



Penny Varley Ceramics

Creations in Clay for the Home and Garden

Pots for the home, sculptures for the garden,
'have a go' workshops and speaker events.
If you are looking for something unique as a gift or
for yourself then contact Penny.

Forthcoming events can be found at
www.pennyvarleyceramics.co.uk
01295 680700 Support Local Business



Animal Portrait Artist

Let me create a picture for you
to keep or give away as a
present. I work in acrylic, pastel
and mixed media. Call Shirley
Cherry on 07900 221120
www.dogtasticportraits.co.uk

Come and visit the Studio,
Orchard House, Back Lane,
Tysoe (opposite Happy
Herefords, Herbert's Farm).

Taking orders all year round.

TYSOE'S COVID CHRISTMAS



Despite Covid, Tysoe still managed to **make Christmas special** for everyone. 'A Christmas Card to Tysoe' saw some fabulous window displays, plus a Children's quiz with a little Christmas treat from the village shop. Big thanks to Alison Cross, Nicki Campbell, Bart and to everyone for their wonderful festive displays.

Christmas Tree lighting went LIVE on Facebook, while TADA's carol-singers toured the village making special 'request stops', but rain made for some soggy Ho Ho Ho's! Christmas Eve saw some socially distanced singing round the tree. Finally Nisha Williams put together an inspired video of 'We Wish You a Merry Christmas' featuring many of our clubs, groups and individuals.

We are so very lucky to live in such a brilliant village!

SANTA'S VISIT

Many excited children were treated to an early visit by Santa on the 12th December, riding his brightly lit sleigh and ably assisted



by his elves and a suspicious looking snowman. There were far more children than had ever been seen in Tysoe before - where did they all come from?! Getting Santa to do a test drive-by took a lot of organising, and thanks must go to those in the village who helped to arrange it with him - Tysoe Christmas Tree Committee, Chief Reindeer driver Michael, Mr Thomas, Erin and Erin, Jo Small, Bart & Louise, the Back Lane gang (you know who you are), Happy Herefords at Herbert's Farm, and last but not least Will and his mobile disco.

Jackie Keyser

MESSAGE FROM ST MARY'S

From Epiphany to Lent

Ash Wednesday falls this year on 17th February. The most fraught and difficult Christmas and Epiphany Season many of us have ever known is over, and the church begins a six-week journey through Lent, culminating in Palm Sunday, Good Friday and Easter Day (April 4th).

Where will we be when Easter comes? We hope and pray that with the rollout of vaccines there will be some signs of hope for a return to normal by then. In the meantime, the safety of parishioners being our priority, the church building is closed and we plan to continue our worship via Zoom.

Before Lent begins we have Shrove Tuesday, or Pancake Day, traditionally the day for using up surplus butter and eggs before the long fast. Different countries celebrate in different ways; some have very colourful parades for Mardi Gras. This sounds exciting unless you know that the translation of "Mardi Gras" is "Fat Tuesday", then it loses some of the romance.

Lent is an important time of year for Christians. It reminds us of Jesus being in the desert for 40 days without food. Literally, he was in quarantine. He used his time of self-isolation to prepare for his ministry of preaching, healing and teaching. Perhaps God is challenging Christians today to use their time of self-isolation or shielding or lockdown to deepen their lives in faith. The traditional Lenten ways are to read God's word more frequently, to devote more time to prayer and perhaps to fast or deny ourselves some luxuries. In addition, we are having to accept new disciplines with all the restrictions on our lives caused by Coronavirus. I invite you to offer them all to God as part of our Lenten journey.

George

Rev. George Heighton

Vicar of Brailes, Rector of Sutton-under-Brailes, Priest in charge of Tysoe, Oxhill & Whatcote

Email revgeorgeh@outlook.com

Telephone 01295 680 201

NATIVITY THANK YOU . . .

I would like to thank our painters: Wise Men: Belinda Keep, Peter Moss, Holy Family: Jude Canning, John Baylis, Carol Clark, Camels: Sue Weatherhead, Laura and Guillane Lepeltier, Shooting Star: Jackie Thompson, Shepherds and sheep: Chris Locke and Jenny Tongue, Steve Bachelor for his carpentry, Anton Lesser for reading the Christmas Story.
Shirley Cherry, Nativity organiser



. . . AND MORE JOKEY CHURCH BULLETINS

- ◆ The ladies of the Church have cast off clothing of every kind. They may be seen in the basement on Friday afternoon.
- ◆ This evening at 7pm there will be hymn singing in the park across from the church. Bring a blanket and be prepared to sin.
- ◆ The pastor would appreciate it if the ladies of the congregation would lend him their electric girdles for the pancake breakfast next Sunday.
- ◆ Low Self Esteem Support Group will meet next Thursday at 7pm. Please use the back door.
- ◆ Weight watchers will meet at 7pm at the First Presbyterian Church. Please use large double door at the side entrance.

Bulletins courtesy of Alan Birkbeck

TYSOE CHURCH RESTORATION FUND

The 180 Club Prize Winners are:

OCTOBER - 1st 2, 2nd 167, 3rd 177, 4th 144

NOVEMBER - 1st 64, 2nd 128, 3rd 98, 4th 59

DECEMBER - 1st 127, 2nd 69, 3rd 157, 4th 113, 5th 143, 6th 149

TYSOE METHODIST CHURCH



It still seems right to wish everyone a Happy New year. But at this time the news about Covid cases is daunting. We pray for all in the medical profession who are stretched and working to the maximum. **HOPE** - we need hope and strength to get through this and must do what we can to help

by taking all precautions we are advised to do. We hold in our prayers those known to us who are suffering and wish them good recoveries.

FOOD BANK The donations box is in the Church Porch. Thank you to all those who continue to support this. **Food Bank is open at St Edmonds Church Shipston on Saturday mornings between 10-12am, if that is difficult, please contact Rev George on 01295 680201.**

Chris Gibbs

TWAM – TOOLS WITH A MISSION

TWAM is a Christian charity which collects unwanted tools, refurbishes them and puts them into Trade Kits to ship to third world countries. After six months residential training course to learn a trade, the students are given a Trade Kit so they can return to their



Patrick trained as a carpenter village to use their newly learnt trade to support their families. If you have any surplus tools or bibles, contact Jim Saxton on 07748 324934 Email: jimsaxton@btinternet.com. Website: <https://www.twam.uk/>

JIGSAW SHARING to beat the lockdown **BLUES!**



If anyone wants to borrow a jigsaw to do in lockdown I have a library for winter use with varying degrees of difficulty. I have 500 piece and 1000 piece puzzles. I also have a couple of super hard ones if you're up for a challenge! Just call me for a jigsaw on 01295 680624.

Alison Cross, The Puzzle Wizard

A FESTIVE AND FUN KNITTING MASTERCLASS!



A BIG THANK YOU to the W.I.'s very talented craft group who decided to cheer up the village in what has been a difficult year for us all. What better way than with a bright and colourful Christmas display in Tysoe Village Tearooms! Your creations were a delight and looked particularly pretty in the dark with the fairy lights switched on.

TYSOE W.I. UPDATES

We are still distributing our monthly meeting bags to all of our members...obviously maintaining a 2 metre distance at the door-step. It's great to know we are still a strong unit even though we cannot physically meet.

Our Facebook page and webpage are regularly updated for members or general public to view to see what we are up to. When we are able to resume meetings again, whenever that may be, we hope to welcome some of the new arrivals in the village. We enjoyed being included in the Tysoe village carol...with our one line!

NOTICE FROM TYSOE VILLAGE HALL TRUST

Tysoe Village Hall remains closed in accordance with Gov.UK guidance. The pandemic has severely affected its opening, resulting in a massive reduction in hire and rental payments. Tysoe Village Hall Trust would like to record its appreciation for payments received from groups able to use the Hall between lockdowns, and donations received from groups (notably Tysoe W.I. and Thursday Keep-Fit Ladies) even when the Hall was closed.

KEVIN THE CAVEMAN



DATES FOR YOUR DIARY

2, 16	TUESDAY		Blue & Green bin collection
8	MONDAY		Ordinary meeting Tysoe Parish Council
9, 23	TUESDAY		Black bin collection
14	SATURDAY		Valentine's Day
16	TUESDAY		Shrove Tuesday—Pancake Day!
17	WEDNESDAY		Ash Wednesday— start of Lent

HAPPY NEW YEAR
from Richard Goode

May your coming year
Be filled with summer light
And puddles to jump,

The warm hum of bees
And the sting of frost,

Of courage and companionship

Nighttime on Still Waters
<https://nosw.buzzsprout.com/>

Tysoe Dementia Friends

The opening of
Tysoe's Dementia Cafe
has had to be postponed.

In the meantime
Dementia Carers are
welcome to call **Paul &
Heather on Tysoe 688376**

or

Email us in confidence:
Talkdementia@mail.com

talkdementia.uk

TYSOE PARISH CLERK'S UPDATE

Councillor Jacqui Sinclair, Councillors and myself wish you the best of health and happiness for 2021. We are optimistic about the roll-out of the new vaccine and the lifting of lockdown restrictions once the worst of the virus has passed. In the meantime we encourage all residents to observe the lockdown and to remember Hands - Face - Space.



Since the last issue of The Record, the Parish Council have met twice, - 14 December and 8 January. The main focus of both of these meetings has been the budget. This year we have budgeted over a 3-year period, allowing the Council to focus on larger, longer term projects like parking and on-going street light replacement.

The headlines from budget discussions are:

- £31,414 has been budgeted for running costs. These include employment and office costs, maintenance of village assets, mowing and tree care.
- £7,000 has been earmarked for projects in 2021. This includes money for more street light replacement, a new noticeboard dedicated to Health & Wellbeing and the start of a pot of money to tackle the growing parking issues in the village. We have also allocated £4,000 as a contingency.

Read Council meeting minutes at www.tysoe.org.uk.

And In Other News...

We are pleased to welcome Matt Jarvis-Cleaver to the Affordable Homes Committee. Parish Council Chairman Jacqui Sinclair is delighted that a younger member of our community has joined the Council, Jacqui said “although we strive to be as representative as possible we are very pleased to have Matt come onboard and represent our young working families.”

As always, please keep safe.

Beverley Thorpe



TYSOE -

A network of wild areas
to benefit wildlife

Spring is on the way and with it a number of new initiatives to support wildlife in the Parish of Tysoe.



Facebook and web pages

Firstly, check out the new Facebook page Tysoe Wildlife **@tysoewildlife**. Your posts on wildlife and environmental topics are very welcome.

We have linked up with a group of villages who are developing plans for wildlife. This group was initiated by the village of Risby in Suffolk. They have been happy to share a version of their logo with us – as seen on the Tysoe Wildlife Facebook page and above.

There is also a dedicated space on the village website – the address is https://www.tysoe.org.uk/about_tysoe/tysoe-wildlife/.



Supporting wildflowers and insects

Together with the Parish Council we are planning to develop some new wildflower areas within the Parish. These will be marked out in the next few months and sown with additional wildflower seeds collected in the locality. This will include the current wildflower areas in School Lane and the Churchyard.

The Parish Council is going to support **'No Mow May'** when a proportion of the mown verges in the Parish will be left unmown for a month. This will allow flowers in the verges to grow for a few weeks and flower, producing sources of pollen and nectar for beneficial insects such as bees. To find out more about the 'No Mow May' initiative nationally please check out Plantlife: No Mow May: <https://bit.ly/3qAHZsD> We will be looking for a few more **'Scaremows'** to appear to support the event.



WILDLIFE FRIENDLY PARISH

created by residents, on both public and private land, and people.

Wildlife in St Mary's Churchyard

In addition to the wildflower areas, bird boxes and hedgehog bunker that have been installed in the churchyard in the last year or so, a new wildlife hedge has been planted. To get a good mixture, the plants came from two suppliers and there is hawthorn, blackthorn, field maple, hazel, crab apple, wild pear, buckthorn, spindle, guelder rose plus one or two other things. They are all native species and hopefully will provide shelter and a source of food for birds and insects once they get going. The buckthorn was included as it's the foodplant of the caterpillars of the brimstone butterfly. Thanks are due to David Bell and Graham Collier who planted the hedge.



Some more yellow rattle seeds were sown in the wild-flower areas in late autumn to suppress the grass and help other flowering plants. More wildflower seeds will be sown in the spring. There are plenty of primrose plants in the churchyard, some have already started to flower, and in a few weeks there will be a wonderful display.


Privately-owned nature areas

There are a number of privately-owned nature areas in the Parish of Tysoe and it would be great to have updates from them during the year. This includes the Sun Rising Natural Burial Ground and Nature Reserve, which has some fantastic habitats for wildlife.

Other plans for 2021

Lockdown has affected all our lives and at the moment we don't know when we'll be able to meet in groups again. We have a number of planned events and activities on hold at the moment including a bat night, butterfly talk and nature walk around the village. Once the future is more certain we will put the plans in place and publicise the events. Lockdown doesn't stop us walking around the village and using the footpaths in the parish. We will aim to flag up areas of wildlife interest as they appear through the year. **Please contribute to this knowledge-sharing.**





The Fondue Box
 Got that Friday Fondue feeling?
 Have a fabulous Swiss Fondue evening with friends!

The Fondue Box contains traditional Swiss fondue cheese, Caquelon and burner as well as Fondue forks, plates and bread!

All delivered to your door!

Gift Vouchers available!

Call us on **07592 728 299** or email to hello@thefonduebox.com
 Find out more about us on www.thefonduebox.com



WHITE HYACINTH CAKE DESIGN

Postal cakes for celebrations or just to brighten up your day - available with 1-2 working day delivery

2 portion box: 1 large portions or 2 smaller sponge cakes: £15.00 (+£5p&p)
4 portion cake box: 4 large portions: £24.00 (+£7p&p)
Chocolate Brownies: 2 portions of 4 mini rich chocolate brownies: £8.00 (+£5p&p)
Chocolate Brownies: 5 portions of 4 mini rich chocolate brownies: £20.00 (+£7p&p)

Each box comes with a complimentary greetings card with your own dedication inside.

FLAVOURS: Vanilla, Lemon, Chocolate, Salted caramel, Carrot, White Chocolate and Raspberry, Chocolate Orange.

debra@whitehyacinthcakes.co.uk

07964 339739 / Facebook messenger
 For more information go to: www.whitehyacinthcakes.co.uk

TYSOE WALLED KITCHEN GARDEN

2020 has been a strange year and due to many more people being at home during lockdown we have sold a lot more plants, fruit and vegetables than last year. We raised over £700 so thank you for all your support.



We donated this money to; Tysoe Dementia friends and Pam Britton Trust for Dementia, ECO work-shop Stratford (for adults with learning disabilities and autism), NGS (National Garden Scheme, medical charities), MIND (mental health charity), Garden Organic digital library, RNIB (Royal National Institute of blind people), NCDS (National Children's deaf society),

We will be growing lots of tomato plants this year so do come and buy some. This year we will be growing varieties including Shirley, Gardeners Delight and Red Cherry.

Unfortunately leeks, which would be our crop to sell on the trolley from January onwards, have been affected by Allium leaf miner and so our first crop this year will be rhubarb which should be available from late February.

Looking forward to gardening in 2021 and whatever the weather there should still be plenty of "spare" organically grown produce on sale at the bottom of the drive.. Visit www.twkg.co.uk to see what's going on in the garden. Sue and Mike Sanderson



FLOWER SHOW 2021

The Flower Show Committee have decided to try and run a Show this year. It will be held on Saturday 21 August 2021. More details to follow next month.

POPPY APPEAL 2020 I never cease to be amazed by people's generosity. Despite no house-to-house collections, the Tysoe and district area excelled itself and raised over £4.3k. A very big thank you to everyone who helped achieve this remarkable milestone. It's higher than our average take and can only go up once I recover all the pub collecting tins. David Sewell

Clip & Collect Garden Waste Service

How do I opt-in to have my green bin emptied?

- 1** Sign-up at www.stratford.gov.uk/gardenwaste or telephone 01789 260628.
- 2** Pay £40 per green bin for a 12 month subscription from 1 April 2021 to 31 March 2022.
- 3** You will receive a permit to put on your green bin prior to 1 April 2021.
- 4** The service will start on 1 April 2021, for those who have subscribed. Your green bin will not be emptied if you have not signed up.

Sign up between
11 January and
28 February 2021
for an early bird charge of
£35 per green bin

Food waste can still be collected on your recycling week even if you don't subscribe to the garden waste service. FREE food waste caddies are available on request.



For more information, please telephone 01789 260628
email streetscene@stratford-dc.gov.uk
or visit www.stratford.gov.uk/gardenwaste

www.stratford.gov.uk



WOT2Grow COMMUNITY ORCHARD

What a start to 2021! Another lock down but we are still able to work at the orchard with suitable precautions and distancing. The weather limits the amount of work and time spent as with pruning it cannot be wet, freezing or very windy!! However we have managed to carry on as well as maintaining the currants and generally keeping things tidy. We are not having regular work sessions until a bit later in the year and we will be starting new projects as we get into the better weather. It was a great shame that we had to cancel the Wassail last year. Hopefully this year we'll be back to normal!



If you are interested in coming along and helping out, please contact one of us or via the web site and we can give you more information. If you become a member then you share in the fruit we harvest, this is one of the main benefits of being a member – free organically produced fruit in season!!

Liz Atkinson (680045), Paul Sayer (680451), Sue and Mike Sanderson (688080) or see the website www.wot2grow.co.uk

2020 WEATHER IN TYSOE - DID YOU KNOW?

- We had a total of 531.59mm rain over the 12 months.
- The driest month was May with just 1.6mm rain.
- The wettest month was October with 95.99mm rain
- The wettest day was October 3rd with 35.05mm
- The coldest day was December 31st at -2.9 degrees
- The hottest day was July 31st at 36.9 degrees
- We had 173 days with no rain



The temperature on 6th January 2021 was lower than any for the whole of 2020. It was -3.8 degrees!!! Brrrrrr!



Credit: Weather data kindly supplied by Sue & Mike Sanderson from Tysoe's Walled Kitchen Garden. 2020 was their first year of records so nothing to compare with as yet.

'You've got to stay silly': secrets of joy from the over-70s

Older people have had it hard over the past year, yet countless surveys have found they are the happiest generation. Here are their tips:

- ☺ Raise your heart rate
- ☺ Do something that makes you feel sexy
- ☺ Be silly
- ☺ Do a job you love, even if it doesn't pay well
- ☺ Don't fear failure
- ☺ Embrace suffering
- ☺ Make a difference



Article by Michael Segalow - 9 Jan 2021
Photograph: Kellie French/The Guardian

Emporium of Positivity

"Recently worked with Jo to support me in securing a new role. Jo was very insightful and sussed me out very quickly! Jo gave practical advice, made me rethink how I communicated and boosted my confidence. Jo was ultra responsive, made time for me at short notice and was a pleasure to work with."

Jane Le Poidevin, College Manager

Personal coaching for positive change

Contact Jo Small on 07946 440 158

jo@emporiumofpositivity.co.uk

www.positivityemporium.com

Hello,

We are contacting you to ask for your views on the development of a Health and Wellbeing Centre in Shipston. South Warwickshire Foundation Trust have been working with Shipston Medical Centre to develop a facility that integrates healthcare for the residents of Shipston and the surrounding villages.

Healthwatch Warwickshire are asking local people and patients what services they would like to see in the Centre. You can do this online: <https://www.surveymonkey.co.uk/r/7RZXBXZ>

Alternatively - if you would prefer to talk to someone on the phone, or if you would like more information, please contact us on **01926 422823** and we can arrange a suitable time with you.

Phase 1 of the planned development is a Health and Wellbeing Centre. This looks to bring together both medical services like GP practices, community café as well as other support services suited to you and the local area.

This is your opportunity to have a say on what services could be available to you and your loved ones. Make your voice count.

Healthwatch Warwickshire is a local independent organisation that works to collect patient and public experiences of health and care. For more information about our work please visit our website.

Thank you

Isobel Jonas, Engagement and Outreach Officer
Tel: 01926 422 823



Please go to our website for further information, including information on coronavirus: www.healthwatchwarwickshire.co.uk



High quality and affordable private physiotherapy in the heart of Tysoe at The Old Fire Station.
Musculoskeletal rehabilitation, sports massage and acupuncture with Sarah Paterson and Glynn Alderman, highly experienced Chartered Physiotherapists.

Book your clinic appointment on 07947028454 or purephysiopractice@outlook.com

Visit our website to find out more about prices and conditions treated at
www.purephysiopractice.co.uk

We are registered with a number of insurance companies including BUPA, AXA PPP & Aviva

Tim Clarke Performance Coaching

Life & Performance Coaching
for adults & teenagers
Tuition for GCSE & A Level
Maths

Tim has 30 years experience
as a qualified coach & teacher
and is a member of
The Coaching Academy
Based near Banbury.
DBS cleared
07984 140 739



**No training support?
No problem! Outsource to
The Training Department Ltd.**

internal communications
Procedure & flowchart design
training design & delivery
training management

Beverley Thorpe MCIPD
07938 633352



info@thetrainingdepartment.co.uk
www.thetrainingdepartment.co.uk

DID YOU KNOW?

You can access past issues of the Tysoe & District Record on-line at www.tysoe.org.uk/tysoe-record.

TYSOE CHILDREN'S GROUP UPDATE

On behalf of everyone here at Tysoe Children's Group, we would like to send our special thanks to all of the lovely people of Tysoe and the surrounding villages for continuing to support us in these very difficult times.



You will no doubt have seen the Facebook posts before Christmas asking you to support our Virtual Raffle and pre-school activity books. We are extremely grateful to everyone for their contributions and we were absolutely delighted to raise £868 - an amazing amount of money in such a short space of time. We have set a target of £2000 to enable us to purchase sensory equipment to enhance the learning opportunities for children of all ages.

Grateful thanks to the DIY SOS team for the staff room makeover too, it's amazing! Without support from our wonderful village and community, this total would not have been achieved so **THANK YOU TYSOE AND OUR LOCAL COMMUNITY!**

LOCAL TRANSPORT SERVICES

Shipston Health & Wellbeing Partnership wishes to advise residents about the current public transport available in the Stratford district:

UBUS (No Group Travel): [For essential journeys only](#)

- Operating weekdays from 9.30 am to 7.00pm
- Booking weekdays from 8.30am to 6.00pm
- Tel No: **01789 264 491**

VASA (Volunteer Drivers): [For medical & vaccine appts only](#)

- Operates weekdays/weekends (inc. early mornings/evenings)
- Requests taken weekdays from 9.00am to 4pm
- During Covid-19 passengers must be able to sit in the back seat of a standard vehicle and wear a facemask
- Tel No: **01789 262 889** press 1 and one of our operators will take your request (3 working days' notice preferred)
- Email: transport@vasa.org.uk or use the transport request form on our website www.vasa.org.uk



STORY COMPETITION AT TYSOE VILLAGE STORES

MARVELLOUS MAX AND THE CHOCCY WHOCCY WOOF BAR by Erin Ellis, age 11 years.

Let me introduce you to Max. He is small with short black curly hair, a fluffy tail and a rather dashing grey moustache. He loves long walks and gravy bones. Max is a dog. But not any ordinary dog. Max has a secret.... He is the most powerful and talented magician in the world. There is only one other living creature that knows about Max's secret and that is Erin, his best friend, master trickster and partner in magical crime. Together they cause no end of magical mischief in their otherwise quiet little village. This is the story of one of their particularly naughty adventures.

It was a beautiful sunny day, not a cloud in the sky, not a puddle on the ground, not a drop of rain... well you get the picture! Erin had been waiting for this day all week as Friday is when she gets her pocket money. A brand new, limited edition Caramel Fudge, Choccy Whoccy Woof Bar has just hit the shelves and she has been absolutely (and I mean really, really, really) dying to try one. But the problem is they have been selling out everywhere and she is so nervous she will miss out! So today, Erin got up super early so she could get to the shop as soon as it opened. She saw it immediately, the golden box of Choccy Whoccy Woof bars were right next to the till and there was one left. She raced to the box and grabbed the chocolate bar, finally it was hers **The CHOC WHOCCY WOOF BAR!!** But then suddenly, out of nowhere Mr Thomason (the meanest shop keeper ever), snatched it out of her hand.

"Hah!!" said Mr Thomason, "Look who has it now!"

"Hey" said Erin in confusion, "I was just about to buy that!"

"Well, this one is mine! Go and get another one!" he chuckled,

"But it's the last one left" Erin said sadly.

"Oh, what a shame for you!! Next time you'll have to be quicker!" and with that he turned away with the chocolate bar in his hand. Erin stood there, shocked, with tears forming in her eyes.

"Come on Max, let's go home" she sobbed.

Max, who had been watching all this time was not very happy with Mr Thomason's behaviour. In fact, he was furious. He whipped out his wand, and quietly chanted out a magical spell and cast it upon the chocolate bar that Mr Thomason had in his hands.

“Max!” shouted Erin, “come on”. With that Max put away his wand and happily trotted out of the door.

The next morning Erin was sent to the shop to buy bread, although she didn’t really want to see Mr Thomason. The shop was unexpectedly quiet, no one was there at all. I bet Mr Thomason has scared all the customers away thought Erin. With Max at her feet she grabbed the loaf of bread and headed over to the till, still no one. After a couple of minutes Erin started to feel impatient as she just wanted to leave as quickly as possible. She looked around and could see that she was still completely alone.

“Hello, Mr Thomason” she called. There was no answer.

She walked to the back of the shop thinking that Mr Thomason could be in the stock room. Hesitating, Erin pushed the old creaky door open and peered into the dull and dusty stock room.

“Mr Thomason?” she called, “Are you there?”

No answer. But she could see movement towards the back of the room so she edged forwards and she could hear mumbling...

“What am I going to do? How can I go out there like this? There must be something here that can help”.

“Mr Thomason?” Erin said quietly again, “is that you?”

Continued p32

*For all your essential and
not so essential purchases!*

We stock a wide range of locally sourced products including fresh bread and pastries, fruit and vegetables, Mabel’s milk, Fowlers chesses, meat pies and ready meals, Gluten-free and vegetarian ranges.

We now have a regular delivery from Barry the butcher – ring us for any special orders by Wednesday and we’ll have them ready for the weekend.

Now offering a home delivery service for groceries, simply email us on **mytysoeshop@gmail.com**.



**Tysoe Village Stores
and
Tea Room**

Opening hours:
Mon-Sat: 09.00 – 19.00
Sun: 09.30 – 17.00
Tel: 01295 688333

Doing our bit to keep you safe – locally!

Then, not believing her eyes, Erin watched as a box rose into the air completely on its own and starting moving closer and closer to her. How was this possible? What on earth was happening? Erin felt fear running through her veins and in a panic grabbed the first thing she could find which was a very large bag of white flour. Screaming at the top of her voice she throws the flour towards the box, and to her surprise it hit something hard, right in the empty space above the box and explodes. The flour goes everywhere and she hears coughing and spluttering as slowly the flour dust starts settling, and right in front of her an outline of a person starts to appear.

“Mr Thomason?” Erin squints to be sure what she is seeing is real. “Is that you?”

“Yes, of course it’s me” he boomed.

Erin was very shocked. “ You, you are.... Well... you are... invisible!” she stammered. “What on earth happened?”

“How am I supposed to know?” Mr Thomason said angrily. “Last night, after I ate that chocolate bar, I started to feel a bit strange, so I headed to bed. Then this morning I woke up like this!”



Illustration by Josh Welsby

Erin thought to herself, the chocolate bar.... She turned round and looked down at Max who was by her feet.

“MAX!?” she said knowingly, “don’t give me those puppy dog eyes. You did this didn’t you?” Max just kept looking at her with an innocent look and wagged his tail.

“Turn Mr Thomason visible again this very instance” she demanded. But Max just grinned, turned around and as quick as that he was gone!

“Wait here” Erin said turning to leave in a panic.

“Please don’t leave me” yelled Mr Thomason,

“You have to trust me” she called as she raced out of the door “I have to find Max” and quickly, she thought.

You see, Erin knew from experience, that Max’s magic had to be reversed before the sun sets that very evening, otherwise Mr Thomason will be invisible..... forever.

THE END

Guillaume Lepeltier’s story - ‘**The Magic Stick**’, the winning entry for the first category (up to 7 years), will appear in the March issue.

**Sponsors: Bart Dalla Mura (Tysoe Village Stores)
Beki Benjamin (Author of *The Adventures of Mo at Butterbee Farm*)**

Judges: Beki Benjamin, Josh Welsby, Bart Dalla Mura

QUIZ—CAN YOU TALK TYSOE?

Can you guess, or do you already know, the correct meaning of these Tysoe colloquial words?

- | | |
|---------------------|--|
| Balsh | (a) bald, (b) to praise, (c) to swerve |
| Bannot | (a) faggot, (b) large walnut, (c) apple |
| Bannock jack | (a) deer, (b) pastie, (c) stickleback |
| Becall | (a) to remember, (b) to libel, (c) to call someone names |
| Beetle | (a) large mallet, (b) insect, (c) to hurry |
| Belocking | (a) shouting, (b) shaking, (c) crying noisily |
| Bob howler | (a) large apple, (b) large pear, (c) large flying moth |
| Bully ‘yed | (a) fish, (b) dragonfly, (c) tadpole |
| Buskin | (a) sock, (b) legging, (c) waistcoat |

Answers on p34



BESPOKE DESIGN SERVICE FOR CUSTOM MADE FURNISHINGS

Pattern book room for you to browse Fabric designs

Curtains, Blinds & Cushions

Loose covers & Lampshade making

Headboards & bedspreads

Curtain poles & tracks

New Sofas & chairs & reupholstery

01295 788145 | ann@annwoolgrove.com
www.annwoolgrove.com | www.yarnhill.co.uk

NEW LOOKS HAIR & BEAUTY SALON

Main Street Middle Tysoe Warwickshire CV35 0SE

01295 680671

BEAUTY TREATMENTS AVAILABLE:

Eyelash Extensions, Epil Pro Hair Removal and PHD Waxing,
Shellac Manicures and Pedicures, Eye Lash Tinting and Facials

Email for more information: vikilunn@hotmail.com

Answers to the Talk Tysoe Quiz on p 33

Balsh (a) Bald, **Bannot** (b) Large walnut, **Bannock jack** (c) Stickle-back, **Becall** (b) To slander, **Beetle** (a) Large mallet, **Bellocking** (c) Crying noisily, **Bob Howler** (c) Large night-flying moth, **Bully 'yed** (c) Tadpole, **Buskin** (b) Legging

MW Services



Home Improvements

Taps, Kitchen Sinks,
Bathroom Sinks, Toilets,
Tiling & Bathrooms
All small jobs

MOB: 07855 736601

TEL: 01295 273057

EMAIL: mjih@hotmail.co.uk



Peter Neal Fencing

- for first class workmanship -

agricultural - stud - estate
& domestic fencing
orchard and large garden
mowing & topping
and much more

peternealfencing@gmail.com

01295 688116



07967 656 462

DIGITAL FITNESS PILATES BOUTIQUE



My classes are ALL by Facebook LIVE to join simply:
Message me on Facebook@AMHFITNESS, call me: 07585 800727
Or email: alisonmarcuse@icloud.com

Interior Affairs

DECORATING COMPANY

- Renovations and period properties
- Domestic and commercial
- Wallpaper hanging
- Internal / external painting
- Paint effects (marbling) etc

Give Simon a call for a friendly quote on: **07974 375865**

www.interior-affairs.co.uk



P. H. GOODMAN & SON LTD

CARPET AND FLOORING SPECIALISTS
Established 1963

Telephone: 01295 680 318 / 277 326

Email: goodmancarpets@gmail.com



Lewis Goodman

Howard Goodman

CLASSIFIEDS

JWelsby Illustration *Commissions welcome. See my online portfolio.* **Web:** jwelsby.carbonmade.com
Email: welwelsby@hotmail.com

Richard E Photography
Web: www.richardephotography.com
Email: richardephotography@yahoo.com **Tel:** 07885 522910

Home Hair Design by Jo *Hair styling for ladies, gents and children in the comfort of your own home.*
Tel Joanne on 01789 741 933 or 07778 569 984



Call Chris Nock
Avon Mobile Foot Care
Mobile: 0770 2600 004 Email: c.nock@virgin.net

Treatment & Advice on

- *nail trimming
- *removal of corns
- *callus reduction
- *cracked heels
- *reduction of thickened nails
- *fungal nail treatment
- *treatment of athlete's foot and verrucas
- *relaxing reflexology with every treatment



Find us on
facebook.



NAPIT

**KG Brooks
Electrical Ltd**



**01295 680 738
07976 677 997**

kbrooks55@btinternet.com

Feldon Flooring

Carpet & Floor Coverings
Supplied & Fitted
Carpet Cleaning

**Terry Goodman
Ben Goodman**

T: 01295 680871

M: 07772 964 691

M: 07837 044151

E: sales@feldonflooring.com



we cater for all woofs
THE DOGBATH

Your local **DOG GROOMERS** situated in a quiet and **RELAXING** environment

01295 680082
cleanmypup@
the DOGBATH.net
Lansdown House, Oxhill Road, Tysoe, CV35 OSX

**THE
TRACK HOUSE**

BESPOKE QUALITY CURTAINS
Large Selection of Designer Fabrics

POLES & TRACKS
Pole Measuring & Fitting Service
Wooden · Metal · Bent for Angled Windows · Plastic
Corded & Uncorded

BLINDS
Roller · Roman · Velux · Panel · Woodslat · Venetian · Vertical

www.trackhouse.co.uk

E: info@trackhouse.co.uk
Tel: 01608 682001

SHOWROOM
Unit 24
Blackwell Business Park
Blackwell
Shipston-on-Stour
Warwickshire · CV36 4PE



TYSOE PHONE BOOK		
Bridge Club	Jane Ridgway	01295 680 262
District Councillor	John Feilding	07966 698 239
Lunch Club	Marion Ascott	01295 680 584
National Grid Emergency		0800 111 999
NGS Open Gardens	Julia Sewell	01295 680 234
Parish Clerk	Beverley Thorpe	parish.clerk@tysoe.org.uk
Police, Safer Neighbourhood Team, Shipston		01789 444 670
Poppy Appeal	David Sewell	01295 680 316
Samaritans		116 123
Severn Trent Emergency		0800 783 4444
Shipston Link	David Sewell	01295 680 316
St Mary's Church	George Heighton	01295 680 201
Talk Dementia	Paul Dowler	01295 688 376
Tennis Club	Carol Spencer	01295 680 659
Tysoe Children's Group	Yvonne Dillon	01295 680 624
Tysoe Bowls Club	Phil Short	01295 680 732
Tysoe Methodists	Rev Jemima Strain	07969 345 389
Tysoe Social Club		01295 680 627
Tysoe Surgery		01295 680 220
Tysoe Utility Trust Grants	Yvonne Dillon	01295 680 567
Tysoe United FC	Steve Allen	07808 633 155
Village Hall Bookings	Jacqueline Franklin	01295 680 051
Women's Institute	Christine Harrop	01295 780 765
WOT2 Grow Orchard	Liz Atkinson	01295 680 045

RED HORSE VALE



Red Horse Vale is a long established and family run distributor of Fuels for heating and vehicles, as well as Building, Farm, Garden Supplies and a large range of Equestrian Products. We deliver goods within 50 miles of our depot at Oxhill.

Working in Partnership with Ouse & Cherwell

01926 642 832

OPEN HOURS

• MONDAY • SATURDAY •
8am to 5pm

HEATING OIL • RED & WHITE DIESEL • LOGS • COAL • WOOD PELLETS
KINDLING • COMPOST • FENCING SUPPLIES • MANURE • POTS
TOP SOIL • GARDEN TOOLS • PET FEEDS • HORSE FEEDS • BEDDING
...and loads more, come and visit our shop

Red Horse Vale, Windmill Farm, Banbury Road (A422),
Oxhill, Warwickshire, CV35 0RP
www.redhorsevale.co.uk • enquiries@redhorsevale.co.uk